

***Northwest Woodworkers Association***

# ***THE SAWDUST NEWS***



**April 2015**

<http://www.nwwoodworkers.org>

An association for woodworkers of all skill levels to share their common interest

## ***The Next Meeting***

**Date: Thursday, May 28, 2015, 6:30 PM**

**Location: Rockler Woodworking - Northgate  
832 NE Northgate Way  
Seattle, WA 98125**

**Program Highlight: *Photographing Your Projects***

This will be an interesting presentation by retired Industrial Arts/Technology teacher Charley Drake. He will share with us how to use our point and shoot cameras and simple, inexpensive supplies to enhance our project photos. Don't miss this one!

## ***April 2015 Meeting Highlights***

***Newsletter Photos by Scott Wilson***

***Meeting Notes by Jan Erickson***



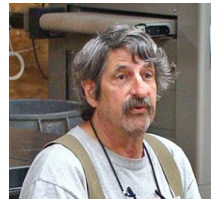
The **April 2015** meeting of the **Northwest Woodworkers Association** was held on **Thursday, April 30, 2015** at **Woodcraft Supply** with 11 members and two guests present.

We want to express our appreciation to **Ron and Michelle Hall** and staff at **Woodcraft Supply** for providing a wonderful venue for this meeting and for extending their store hours to accommodate our extended length program. We really appreciate your continued support.



We were pleased to have **Jim Sullivan** visit our meeting at the suggestion of **Allen McCall** to learn more about the **Association**. **Jim** said that his interests included furniture making, noting that one of his recent creations was a baby cradle. He was also gracious enough to bring along one of his carvings to share with the group – but more about that later.

**Steve Dando**, who happened to be present thinking that he was going to teach a class that evening, decided to join us for the meeting and offered some useful suggestions to those folks who had proposed questions and problems to the group. Thanks, **Steve** for sharing with us. Please come again.



## ***Problem Solving/Tool Updates***

**Bob Craig** showed a wooden steak knife box he is attempting to refinish. Having tried unsuccessfully to use a hand scraper to remove the old finish, **Bob** was soliciting advice regarding better methods to accomplish his task. Due to the configuration of the box, the group responded that a scraper was probably not the best tool for the job and suggested that perhaps the most effective way to remove the old finish was by use of a chemical stripper.



**Jan Erickson** asked for help trouble shooting difficulties resawing 6" cherry with her bandsaw. A variety of suggested causes and solutions included possibly increasing her blade tension, replacing a potentially dull blade with a sharper one, and perhaps checking and replacing her bandsaw tires – definitely a last resort, as this is a difficult task that can best be accomplished by removal of the bandsaw wheels and removing/installing the

tires on the bench.

**Mark Martinez** had mentioned at a previous meeting that he had purchased a **DeWalt Scroll Saw** in good condition from Goodwill for a really good price because it didn't have a hold down accessory. After further investigation, **Mark** noted that he discovered that most folks who do much scroll sawing have removed the hold down from their saws to provide better visibility and access for blade changing. So he decided that he would learn to use the saw without that feature.



# *Program Highlight – Mega Show 'N' Tell*

We were treated to a fantastic display of member participation and a wonderful variety of woodworking projects from bowls and boxes to shelves and vases! What a talented group!! Here is a list of folks and their projects – in alphabetical order, for no particular reason.....:-)

Note that the Steering Committee recommended that folks bring their **2 X 4 Challenge** entries from last month so that the members who attend the meetings at **Woodcraft** could see them in person, as a photo in the Newsletter is not like seeing the real thing.

## **Bill Bond**



**Bill** brought his elegant bird feeder, the Third Prize entry in the **2 X 4 Challenge**, as well as some of the unique jigs and tooling he used to fabricate the project. Unlike the antique bird feeder used for his inspiration, he installed a removable chimney to allow filling the feeder. **Bill** also showed us the copper foil material he purchased from

**Hobby Lobby** to cover the peaked roof of the bird feeder. He also brought along a fixture used for holding the copper gutter pieces for soldering and another for forming the copper tubing downspouts. Great job, **Bill**! You should have some happy birds!



## **Dan Cordwell**



**Dan** displayed three interesting projects – an undercounter paper towel holder/dispenser, a clever dowel cutoff jig, and a well engineered wooden scissors lift/support stand.

The paper towel holder/dispenser, designed to be secured to the bottom of an upper kitchen cabinet, had a drop down front panel which provided great access.

The dowel cutoff jig was designed with an integral adjustable length stop and a pencil sharpener for chamfering the ends of the dowels after cutting to length. Clever, **Dan**!!

But the star of the show was the wooden scissors lift/support stand. Using his engineering skills, **Dan** carefully designed two versions of this device – what he called the 1X version and the 2X version, referring to the double height obtainable with the larger design. He noted that an Acme screw and nut works best for the raising mechanism – this hardware being available from such sources as MSC Direct, McMaster-Carr, and other industrial suppliers.

In the photo above, note the collapsed configuration of the scissors lift/support stand on the bench and on the screen the same device extended for use as a material support for his drill press. He also offered to provide plans for this project to members by simply contacting him via email: [DTC776@Frontier.com](mailto:DTC776@Frontier.com) Great projects, **Dan** – thanks for sharing!!

### **Charlie Culler**



**Charlie** brought along an interesting shelf he designed and built for his kitchen. This project was unique in that it consisted of what appeared to be a maple frame with an inset walnut gridwork. The piece was designed to be mounted on the wall with some nicely designed brackets he purchased from **Lee Valley**. It also incorporated a round metal bar under the front edge of the shelf with metal “S” hooks for hanging his Cuisinart accessories.

He noted that the worst part of the project was finishing the insides of the many cells on the wooden gridwork with a small artist’s brush. Wow, **Charlie** – is that called patience or self punishment??

However, he was pleased with the results of his efforts to the degree that he is considering reworking his kitchen to match! Guess we will have to look at him next meeting to see if he has crosshatched eyeballs from finishing all of those grids..... :-) Nice work as usual, **Charlie!**

### **Jan Erickson**



**Jan** displayed a delightful collection of cherry, maple, and poplar boxes she had recently made, which she called her “**Facet Collection**”, referring to the multiple facets on the sides and lids of the boxes. She noted that all of the boxes were constructed with miter joints at the corners, made with her miter saw.

Great designs with tight, well fitting corner joints, **Jan!** Excellent workmanship!! She laughed as she noted that for once she didn’t have to use any filler or putty on her corner joints!

We rejoice with **Jan** as we can see how far her woodworking skills have progressed – remembering that not long ago she had the courage to get up in front of the group and proclaim that she was a Beginner, but she wanted to learn! Congratulations, **Jan**, you have definitely left the Beginner category far behind and we delight to see you have the desire to keep on learning and improving!!



**Jan** said the beautifully grained, dark colored box, was made from **Cambia poplar**, purchased from **Crosscut Hardwoods**. The Cambia process is apparently one in which the wood is thermally treated at a high temperature in a controlled atmosphere, producing the dark color. Sure looked a lot like Black Walnut! Beautiful!!



Here's more information about this product: <http://www.cambiawood.com/pages/poplar.html> , and other wood species: [http://www.cambiawood.com/img/Cambia\\_byNFP.pdf](http://www.cambiawood.com/img/Cambia_byNFP.pdf)

## **Dan Ford**



**A Proud Grandpa**



**Dan**, the proud first-time Grandfather of six-day old grandchild, brought two delightfully crafted projects to display. Congratulations, **Dan**!! The first was a uniquely designed serving tray with sloping sides and two inlaid tree shapes. He explained that the trees represented a pair of trees he views from the front of his home. **Dan** said that he had used a router inlay kit to make the inlay pockets

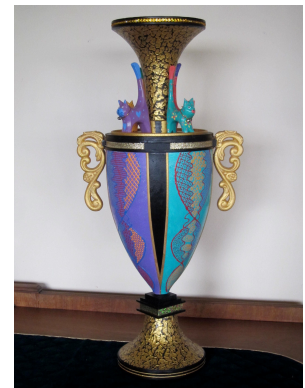
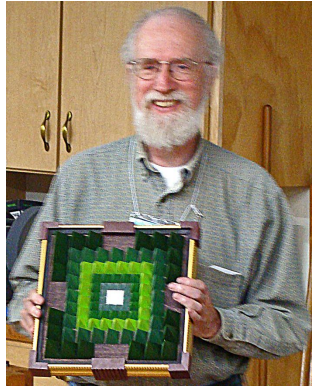
and inlays – noting that using the kit with the multiple spacer bushings and a small carbide bit makes it very easy to produce such accurate inlays, even though it looks like it would be quite difficult.

His second project was a cutting board of laminated hickory strips with two curved inserts of colored woods. **Dan** described his interesting process for installing the curved inserts, noting that he made a separate router template for each of the different shaped curves.



After clamping a template to the board, he made a groove most of the way through the board, following the template with a pattern bit. Then he bandsawed down the middle of the groove to separate the pieces and used a flush trim bit to remove the material remaining from the groove cut. He then selected the colored strips to make up the insert, noting that the key to success in maintaining part alignment was making an insert that **exactly** fit the width of the original groove. After gluing in the first insert, he repeated the operations for the second one. He noted that one of the most difficult parts of the project was clamping the parts sufficiently to maintain alignment, as the curved inserts of multiple strips tended to allow the pieces to shift during clamping. Topping the project off with a food-safe cutting board finish produced a beautiful, striking piece. Great job on both projects, **Dan**!

## Chris Green



**Chris** graced our meeting with three of his recent artistic creations – a beautiful box of vibrantly colored veneers, a second box with two distinctly different lids, and an exquisitely crafted vase.

He noted that a discussion of the colorfully veneered box would be deferred to the **June** meeting which will highlight veneering and veneered projects.

His second box, of an approximately square, low profile design, incorporated solid paneled sides inset into interesting profiled corners and feet. His original lid for this box incorporated a series of colored pyramidal shapes, but he felt that perhaps the design was “too heavy” to complement the box, so he designed and fabricated a second thinner one. This lovely lid contained an interesting geometric star shape composed of multiple strips of 1/16” colored veneers which he milled himself.

And to top off his artistic projects, **Chris** displayed a stunning vase which he named “**A Cat’s Meow**”! The theme of the piece was centered around an array of four colorfully painted wooden cats, which he said were purchased on a trip to Italy some five years or so ago. The color theme for the piece and the location of the matching colored panels of the vase were coordinated with the lovely painted cats. Us cat lovers could really appreciate this one!!

He used a slide show presentation of many of the steps used to fabricate the vase and a similar one currently under construction. Wonderful artistic creations, **Chris**!!

## Mark Martinez



**Mark** presented an interesting and entertaining slide show of revisions he has made to his workshop in order to fit it into a 10 foot wide half of a single car garage. His well thought out, space-saving innovations, clever storage solutions, stackable tools, and multi-tasked bench/table saw were amazing. Even within those tight confines, he still managed to squeeze in a lumber storage area! What clever ideas for use of such a small space. Very well done, **Mark!!** Thanks for sharing your ideas with us.

## Herb Stoops



At the beginning of his presentation, **Herb** invited the members to take home one or more of the clever custom push sticks he had made as Christmas gifts to the **Association** members and distributed at the **December 2014** meeting at **Rockler – Northgate**. Thanks, **Herb** – these are well made accessories designed for safe woodworking.



He then proceeded with a brief description of the **Rubber Band Rifle** he had entered into the **2015 2 X 4 Challenge**. **Herb** also showed some of the plans and descriptive literature that he had downloaded from the internet to build the project and passed the **Rifle** around for the group to admire.

Then to our delight **Herb** displayed a very unique Aromatic Tennessee Cedar box which was full of innovations and surprises! Using his **Incra Hingecrafter Jig** and matching **Whiteside** router bit set, he crafted the box with integral wooden hinges for each of the corner joints, as well as the lid, the side handles, hasp, and the latch mechanism! Wow, he sure gave that set of tools a workout!! He noted that the bottom of the box kept all of the hinged corners aligned.



Ah, but the best was yet to come.....! He opened the box and brought forth two sets of stacked half trays! And then he removed a false bottom panel to show a “secret” compartment underneath!!

But that was not all.....he then turned the box upside down and removed a sliding panel to reveal *another* “secret” compartment! My goodness, **Herb**, opening your box is like going on a treasure hunt!!

Wow, what a beautifully crafted box with a host of fun, imaginative features! Looks like you really enjoyed creating this project! Great job, **Herb**, and thanks for sharing it with us!





## **Paul Stoops**



For the benefit of those folks who weren't present for the **2015 2 X 4 Challenge**, **Paul** showed his First Prize winning **Asian Inspired Box** entry.

He noted that although he had made number of drawer boxes for various projects, this was his first attempt at making a decorative box. It was also his first use of mortised quadrant hinges – an interesting challenge. **Paul** also noted that this jewelry box is a prototype for a couple of similar hardwood boxes currently under construction.



His second project was a yarn bowl, for his wife, **Sara**, an avid creator of beautiful crocheted items like blankets, afghans, etc. He noted that he was inspired by a lovely scroll sawn yarn bowl, made by **Tom Howorth**, shown at an earlier meeting.

Lacking a scroll saw or a lathe in his shop, he did an internet search to find an alternate construction method and discovered an interesting yarn bowl project with a step-by-step set of graphical instructions on a website called **Instructables**:

( <http://www.instructables.com/id/Bamboo-Yarn-Bowl/> )

Interestingly, the article author used a Bamboo bowl purchased from **Ikea** to construct his yarn bowl. Intrigued, **Paul** decided he would build a similar design with some enhancements, like an improved yarn guide slot configuration and a weighted base to make it more functional.

So off to **Ikea** to shop for a bowl.....( <http://www.ikea.com/us/en/catalog/products/60214343/#/20214340> ) From the **Ikea Blanda Matt** bowl series, he found an 8" diameter bowl for the main body, and discovered a smaller 5" diameter bowl suitable for a base. These bowls are ideal for this project because the inner and outer surfaces are very smooth with a slippery finish on them, allowing the yarn ball to spin freely without snagging.

The yarn guide slot was laid out freehand, cut into the side of the larger bowl with a coping saw, and smoothed with needle files and sandpaper. He noted that the Bamboo material is very hard and difficult to cut and smooth.

After creating a flat area on the bottom of each bowl by passing them through his drum sander, and reducing the height to the smaller bowl to about 1", he glued the two bowls together – the smaller inverted bowl becoming a base for the upright larger one.

To weight the yarn bowl to keep it from moving around in use, **Paul** secured multiple coils of pencil lead fishing weights in the base bowl with caulking compound and closed off the bowl with a thin plywood disk. To further prevent the yarn bowl from moving around, he coated the bottom of the bowl with **Performix Plastidip**, a rubber compound in an aerosol can, making the base very non-slip. A very functional project **Paul**, which no doubt delights the resident crocheter (a.k.a Cook).....:-)





And lastly, but certainly not least, meeting guest **Jim Sullivan**, graciously brought along a wonderful wall mounted plaque to show us.

He noted that this was a project he had made some time ago as he was venturing into the world of carving.



The plaque was a **Western Red Cedar** plank into which he had carved a Native American inspired fish design – which looked to be depicting a salmon. The beautifully colored image was set off from the natural colored Cedar background with vee grooves carved into the plank, outlining the image and its many features. The carving and the coloration of the image were very striking and well executed. To further enhance the project, the eye of the fish was made from a disk of iridescent Abalone shell.

**Jim** indicated that he was interested in some suggestions for improving the appearance of the wood plaque to enhance the project. Members offered several alternatives including lightly sanding the wood and applying a clear, semi-gloss finish. A really great project, **Jim** – thanks for bringing it along to share with us. We hope you enjoyed the meeting and will consider joining the **Association**. We really appreciated your participation.

After display of all of the wonderful projects, a participation prize drawing was held for all of the entrants. The winner of the \$25 gift card was **Dan Cordwell**. Congratulations, **Dan**, -- and a hearty thanks to all of you who brought your projects to share. This was a great show!!

## **Upcoming Events**

**May 2015 Meeting** – The **May** meeting will be held at **Rockler – Northgate** on **Thursday, May 28, 2015**. This will be a really interesting presentation by guest speaker Charley Drake, regarding the techniques for successful woodworking project photography using your point and shoot cameras and simple, low cost materials. Don't miss this one!!

**June 2015 Meeting** – The **June** meeting will be held at **Woodcraft Supply** on **Thursday, June 25, 2015**. This meeting will highlight all things veneering -- including veneered projects, veneer preparation, veneer application methods and techniques, etc. Please plan to bring your veneered projects as well as any photos or other information you may have on a thumb drive to help us all get up to speed with this woodworking technique.

## *Note from the Editor*



We were pleased to see such wonderful member participation in the **April 2015** meeting. What a delightful variety of well crafted projects. Thanks to all entrants who helped make the meeting so interesting, informative, and entertaining. Those of you who weren't in attendance really missed a dandy!

We were also pleased with the performance of the new video projector recently purchased by the **Association**. It was especially interesting to note that one of the unique features of this equipment is its capability to project an image from off-center of the screen without distortion, allowing the projector and operator to be more out of the viewing area of the audience.

We are looking forward to another event with high member participation at the upcoming **June 2015** meeting which will feature veneering. Having received such a generous gift of a large quantity of high quality hardwood veneer, which was distributed to interested members in our **Veneer Giveaway** during the **December 2014** meeting, we hope that our members have had sufficient time to experiment and work with this material.

We anticipate seeing some new projects incorporating this donated material, and a number of members sharing their learning experiences working with the veneer. Sometimes the most useful information comes from failed attempts, so please be willing to share your veneering experiences – either good or bad.

This is a new woodworking skill for most of us, so any and all information and experience we can share with each other will be beneficial to the whole group. We need to know what works and what doesn't. Bring along jigs, fixtures, specialized tools, etc. as well as photos and other information on a thumb drive so we can project it on the screen at the meeting. Let's work collectively to learn how to use this unique material form.

Bring along your questions and observations. Remember, the only dumb question is the one that isn't asked – we are here to help each other improve our woodworking knowledge and skills. Veneered boxes and furniture are waiting in the wings to spring forth from your shops..... :-) Bring 'em on folks!!

Happy Woodworking,

Paul

# **Northwest Woodworkers Association Sponsors**

We appreciate the generous support provided by our NWWA sponsors, from providing member discounts on purchased items to providing state of the art venues for us to conduct our monthly meetings. Thank you, Sponsors!

**Blackstock Lumber**

Seattle, WA 98119  
1039 Elliot Ave. W.  
*10% Contractor Discount*

**Craftsman Studio**

2815 Baker St, STE 205  
Everett, WA 98275  
*10% Discount online with entered code*

**Crosscut Hardwoods**

4100 – 1<sup>st</sup> Avenue South  
Seattle, WA 98134  
*10% Member Discount*

**Edensaw Woods**

925 East 25th Street  
Tacoma, WA 98421-2323

**IsGood Woodworks**

4660 E. Marginal Way S, Suite 7  
Seattle WA 98134  
*10% Member Discount on Selected Services*

**Midway Plywood – Lynnwood**

14004 Highway 99  
Lynnwood, WA 98087  
*10% Discount with membership card*

**Rockler Woodworking and Hardware – Northgate**

832 NE Northgate Way Seattle, WA 98125  
*10% Member Discount (except sale items and power tools)*

**Rockler Woodworking and Hardware – Tukwila**

345 Tukwila Parkway  
Tukwila, WA 98188  
*10% Member Discount (except sale items and power tools)*

**Woodcraft Supply**

5963 Corson S.  
Seattle, WA 98108  
*10% Member Discount (except sale items, power tools, workbenches)*

# **Northwest Woodworkers Association Contacts**

**Membership**—Allen McCall

**Treasurer**—Chris Green

**Secretary**—Jan Erickson

**Raffle**— Herb Stoops

**Webmaster**--- Tom Howorth [thoworth@gmail.com](mailto:thoworth@gmail.com)

**Newsletter Editor**--- Paul Stoops [pmstoops@comcast.net](mailto:pmstoops@comcast.net) 253-804-3209

**Photographer**— Scott Wilson

**Steering Committee**

Bill Bond [williamcbond@comcast.net](mailto:williamcbond@comcast.net)

Chris Green [chrisandrenegreen@gmail.com](mailto:chrisandrenegreen@gmail.com)

Allen McCall [allen.mccll@gmail.com](mailto:allen.mccll@gmail.com)

Herb Stoops [hcstoops@comcast.net](mailto:hcstoops@comcast.net)

Paul Stoops [pmstoops@comcast.net](mailto:pmstoops@comcast.net)

We encourage our members to contact any of the above individuals with questions, comments, or items that may be of interest to the membership.

In addition, please visit our website and forum: <http://www.nwwoodworkers.org>



